

2017

# Import Custom Tables Guide

**act4support**

James Young

Act4Work.com

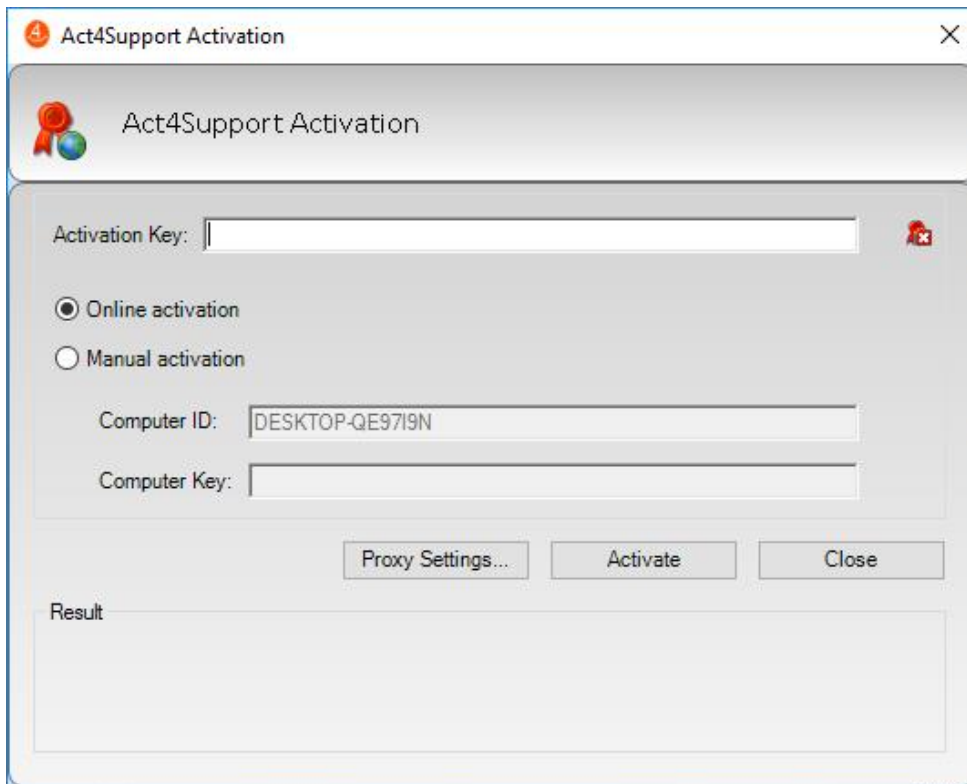
1/4/2017



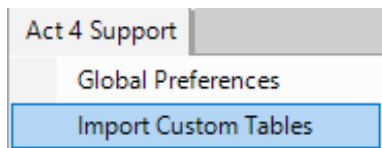
## Act4Support Import Custom Tables Guide

### Complete these steps to Import Custom tables for Act4Support

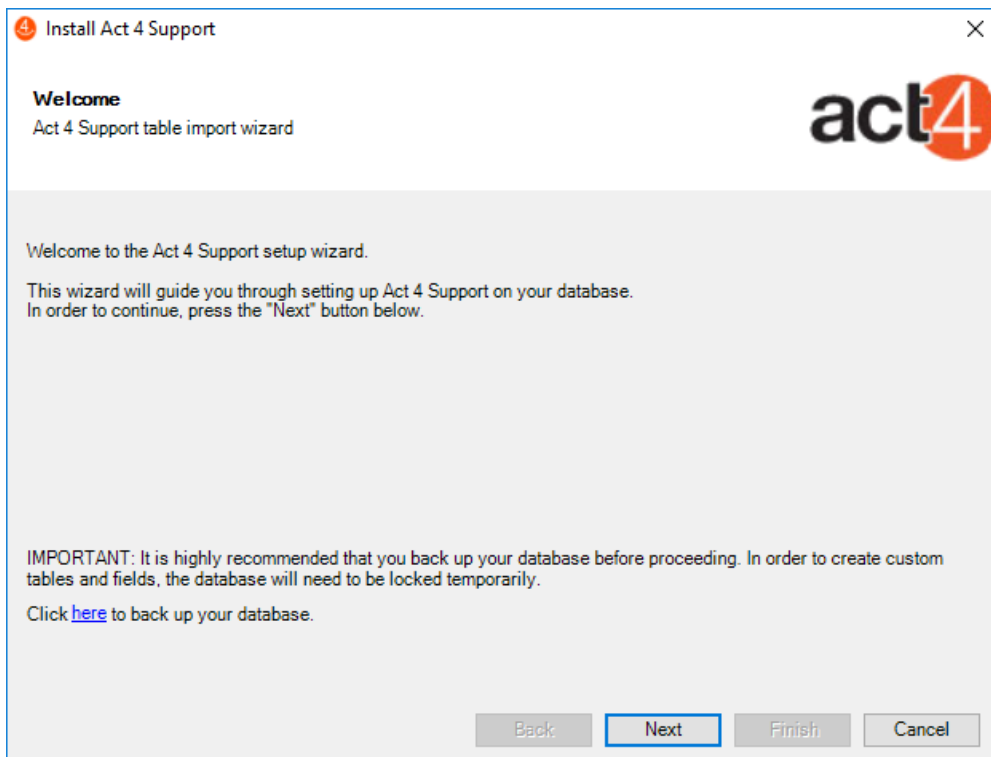
1. After installing Act4Support, Launch Act!. You will see the following screen:
  - a. Enter the Activation Key:
  - b. Click **Activate**
  - c. Click **Close**



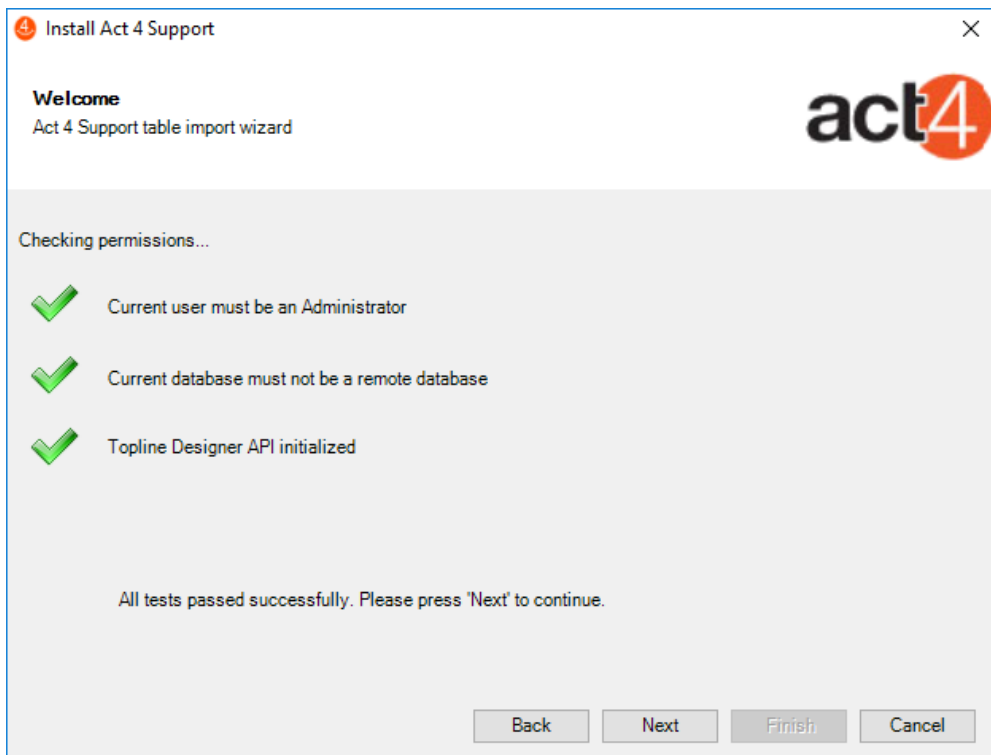
2. Click on **Act4Support** on the Act Menu Bar and Select **Import Custom Tables**



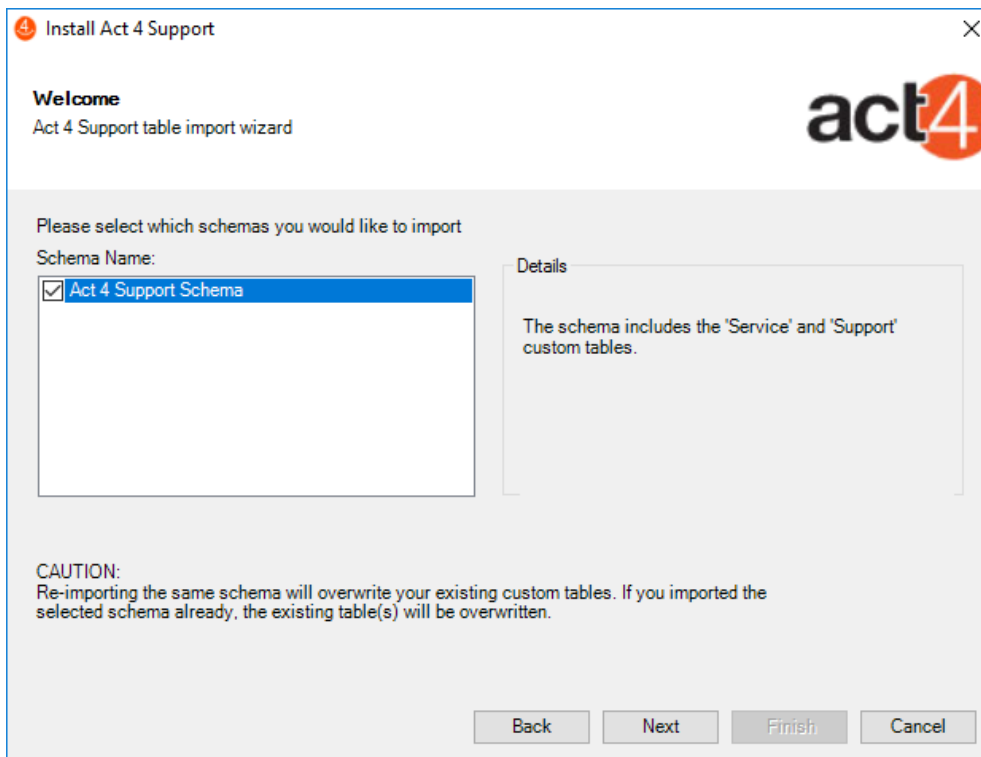
### 3. Act4Support Setup – Click **Next**



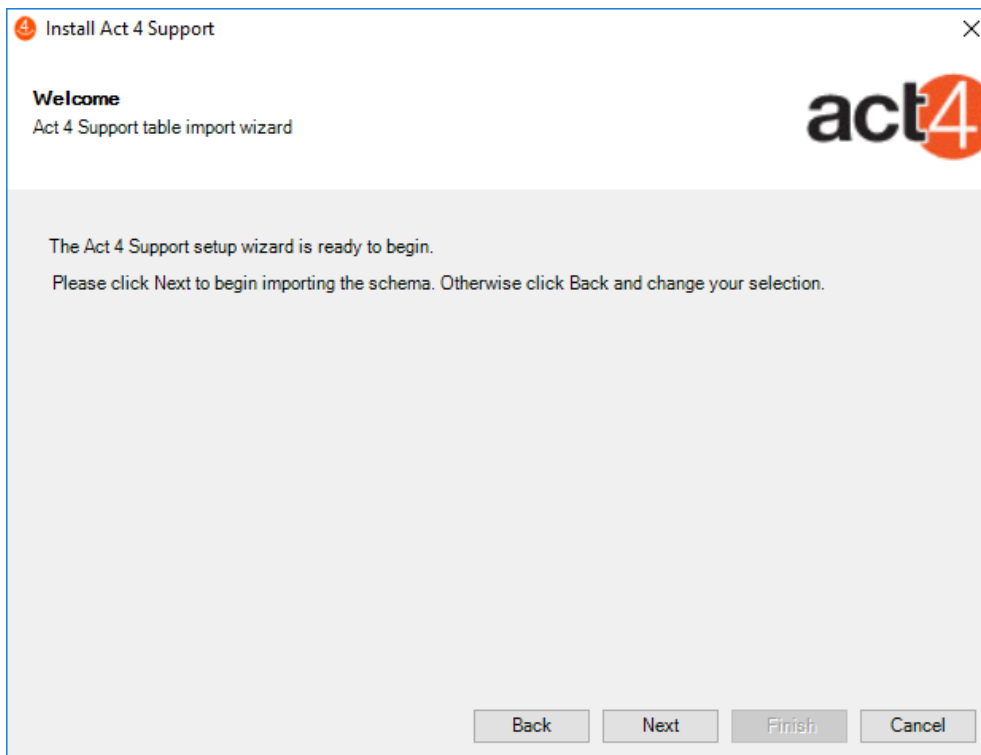
### 4. Checking Permissions: Click **Next**



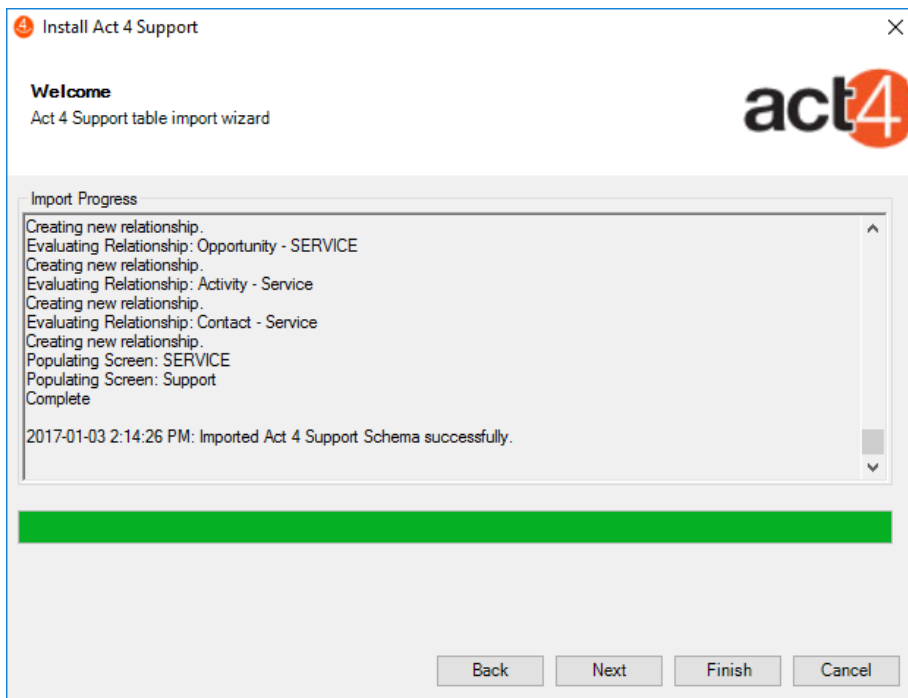
5. Choose the features you wish to install – Check the box and Click **Next**



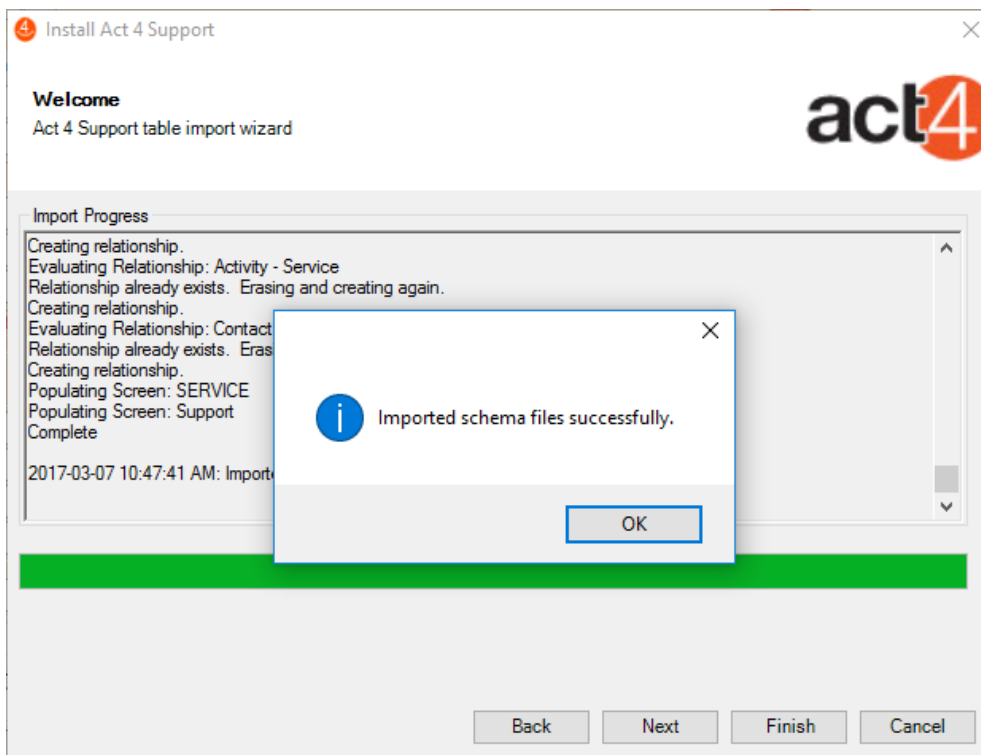
6. Act4Support Table Import wizard is ready: Click **Next**



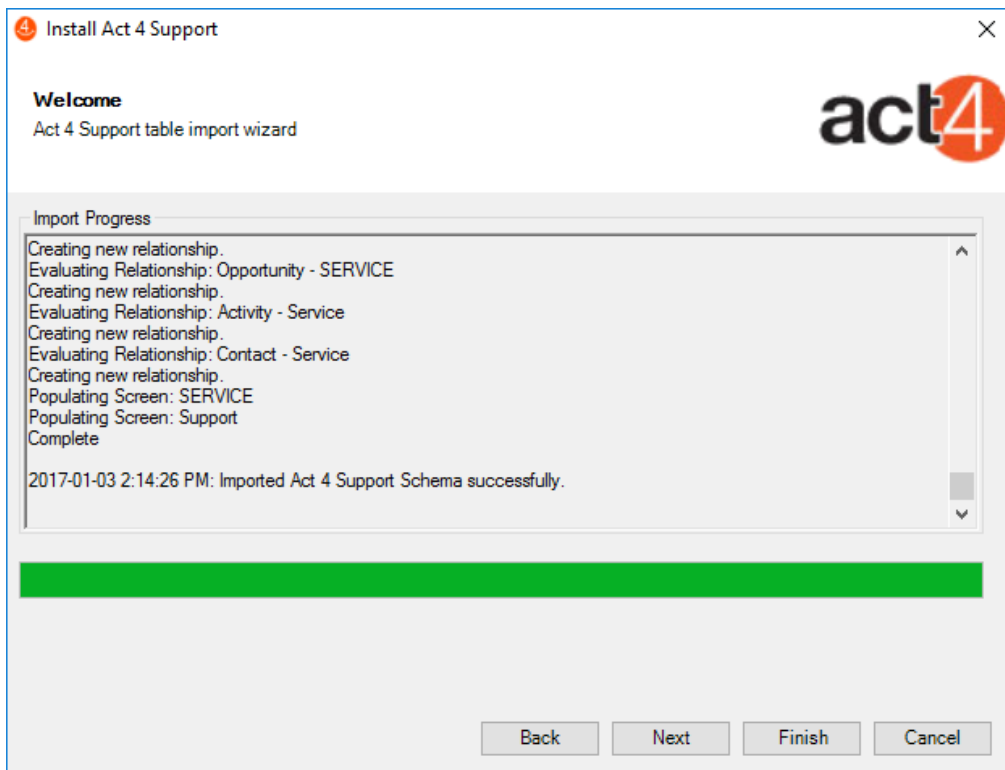
## 7. Act4Support is now being setup



## 8. Once complete Click OK



9. Click **Finish**



10. Restart Act!

**Welcome to Act4Support!**