

2017

Install Guide

act4support

James Young


Act4Work.com

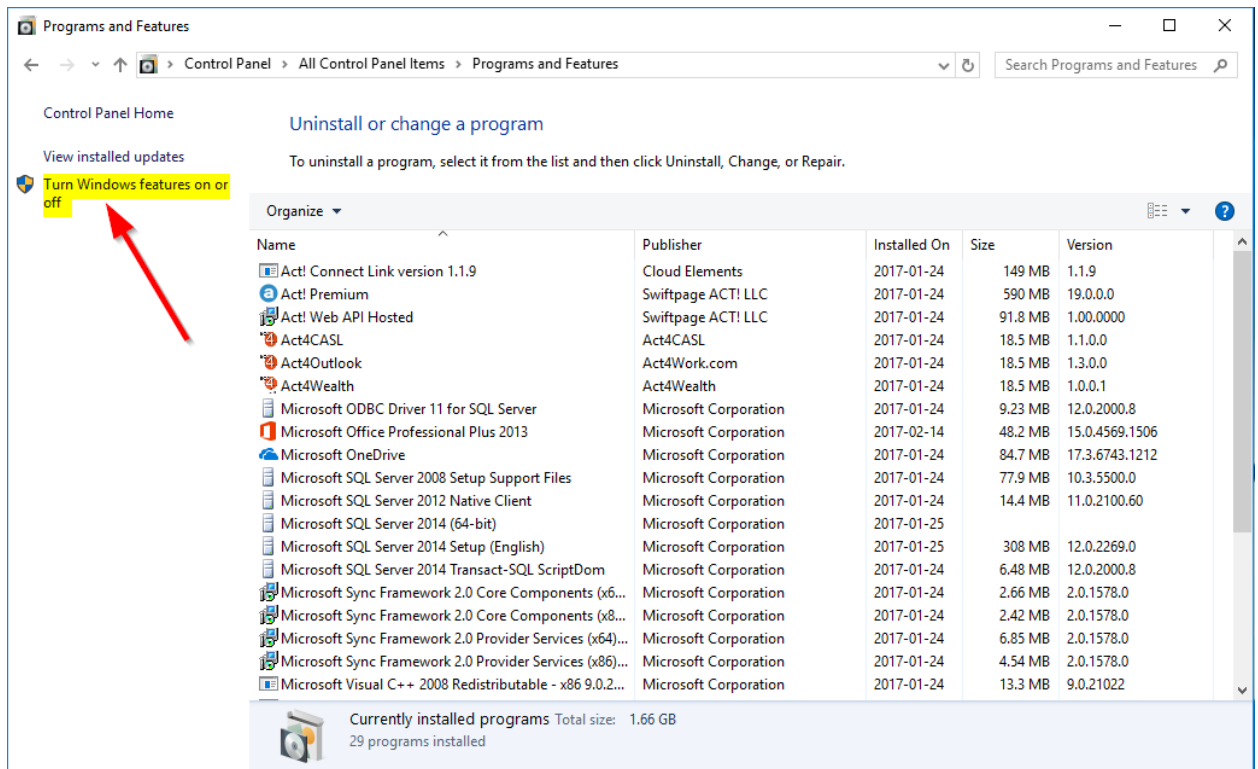
1/4/2017



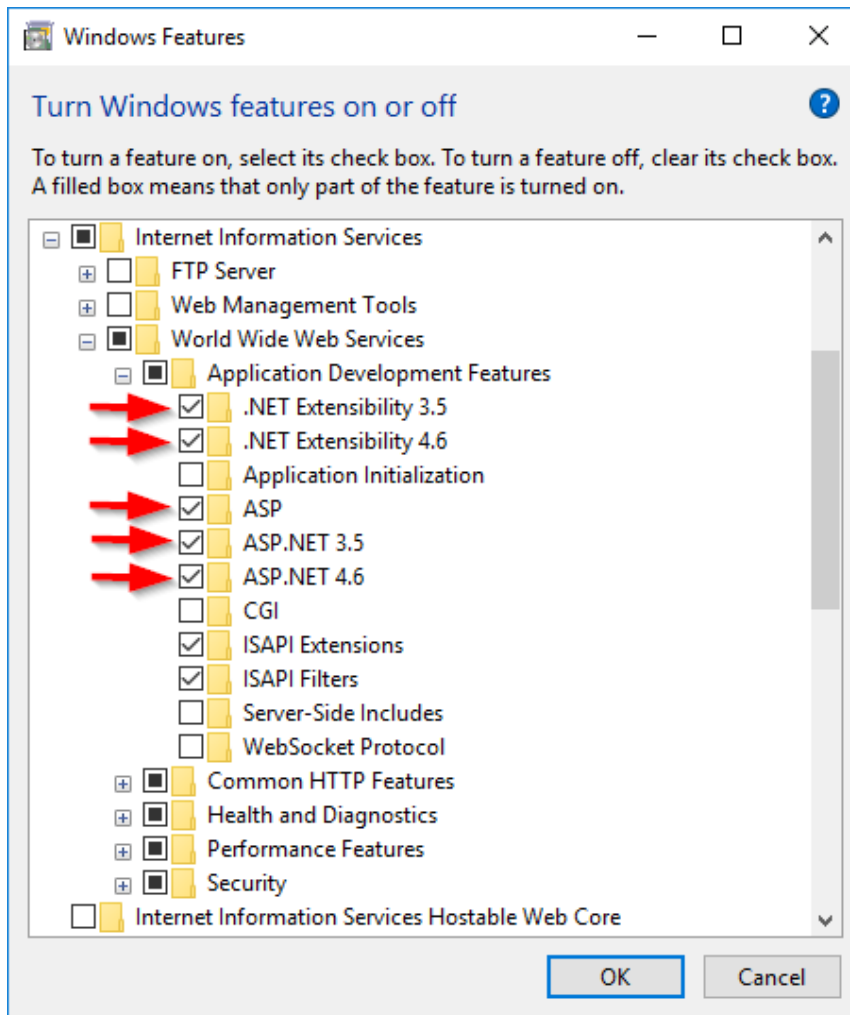
Act4Support Install Guide

Complete these steps **BEFORE** you install Act4Support

1. Open the **Programs and Features** by pressing the **Windows Button + R**  + **R**
 - a. You should see the **Programs and Features** screen:
2. Click on **“Turn Windows features on or off”**

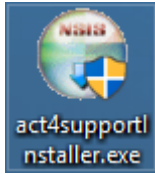


3. Click on the + beside **Internet Information Services** to expand options
 - a. Expand **World Wide Web Services** then **Application Development Features** by clicking the + sign
 - b. Place a check mark in the boxes as indicated by **Red Arrow**
 - c. Click **Ok**



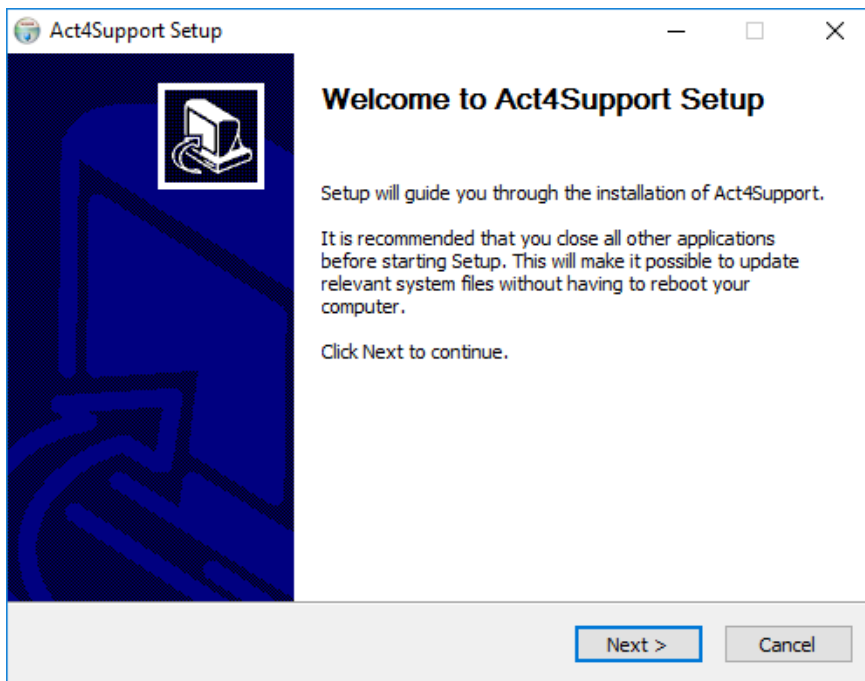
Complete these steps to install Act4Support

1. Download and save the Installation file to your computer



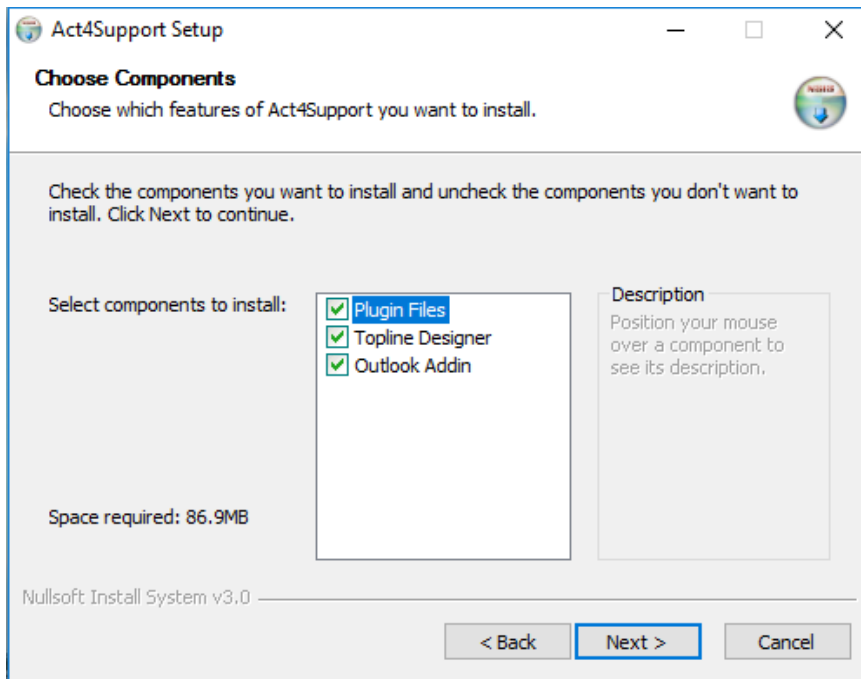
*(Note: After downloading, ensure the file is not **Blocked** by your AV or Windows Security. Right click on the file, Select **Properties** and click **Unblock** at the bottom of the screen, and then click **Apply**)*

2. Double click the file to launch the installation
 - a. If you have any issues running the installation **Right Click** on the file and choose “**Run as Administrator**”

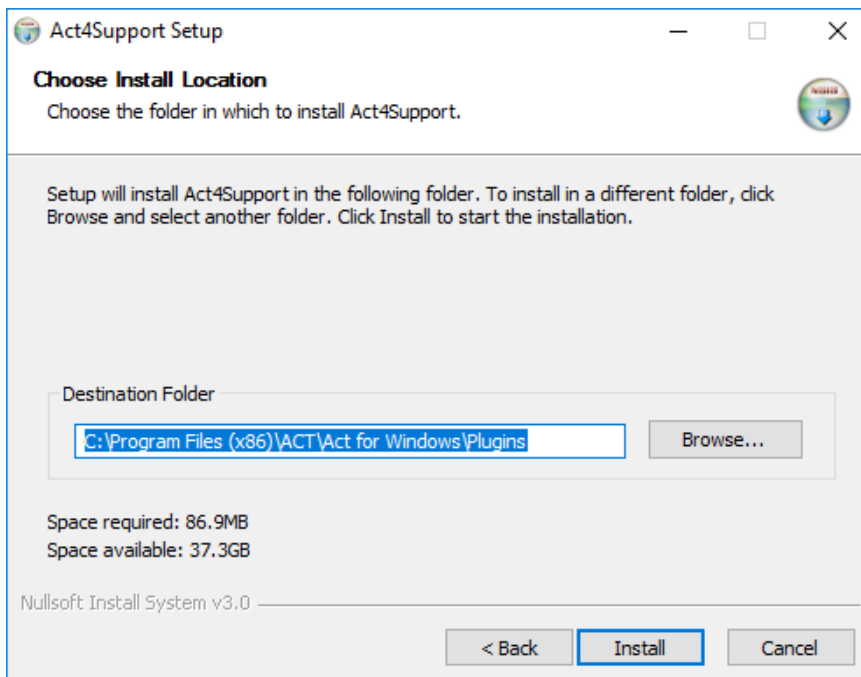


3. Click **Next**

4. Choose the features you wish to install
 - a. **Note:** If this is a brand new install and you do not have Topline Designer installed, leave all the boxes checked.
5. Click **Next**



6. Click **Install** – (*DO NOT change the Destination Folder unless Act has been installed in a different location*)

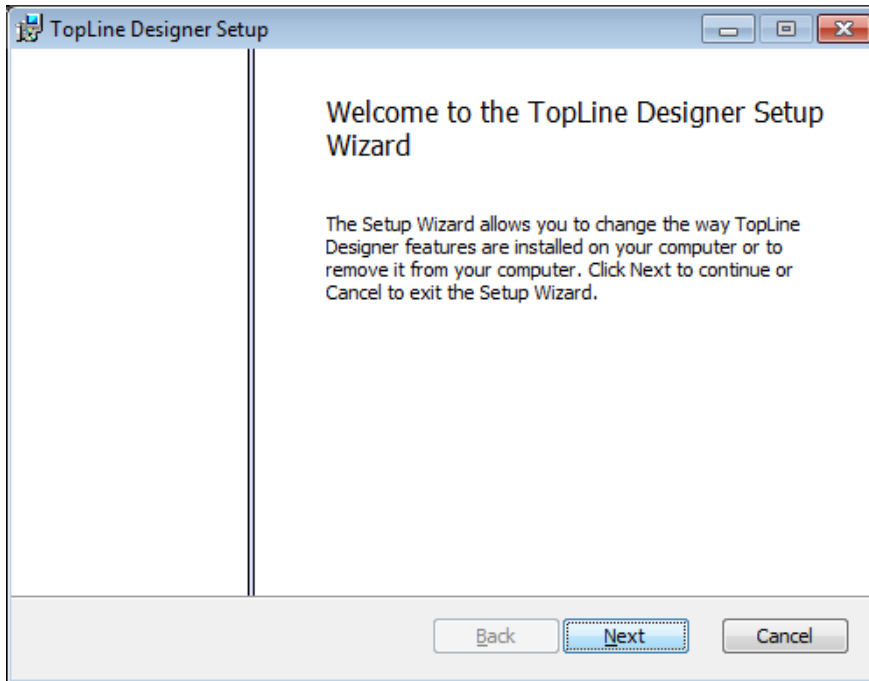


Once the Install is complete the Topline Designer Install will start

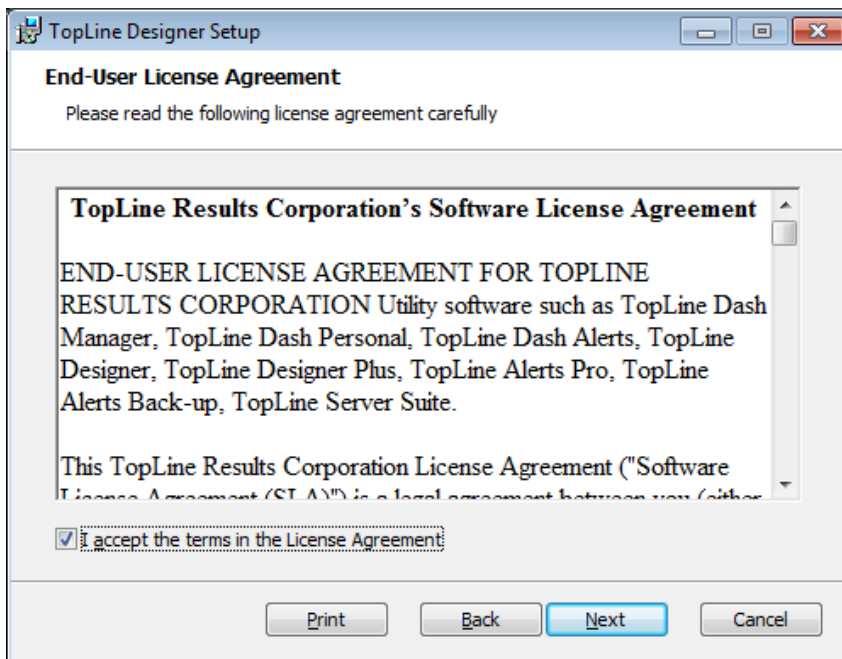
http://files.toplineresults.com/toplinehelp/designerhelp/running_installation.htm

Topline Designer is a plug-in for ACT! and is only visible inside of ACT!

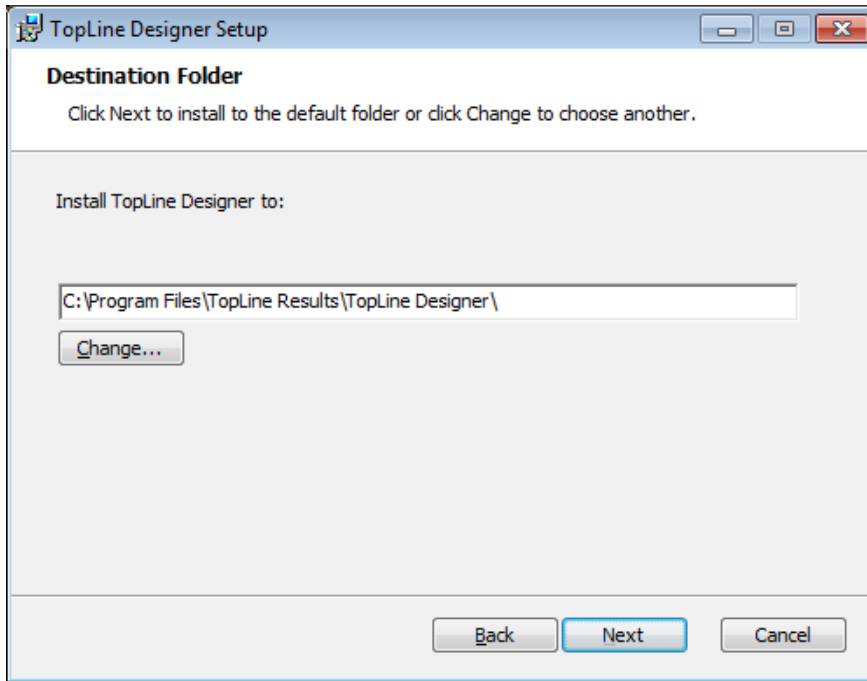
7. Click **Next**



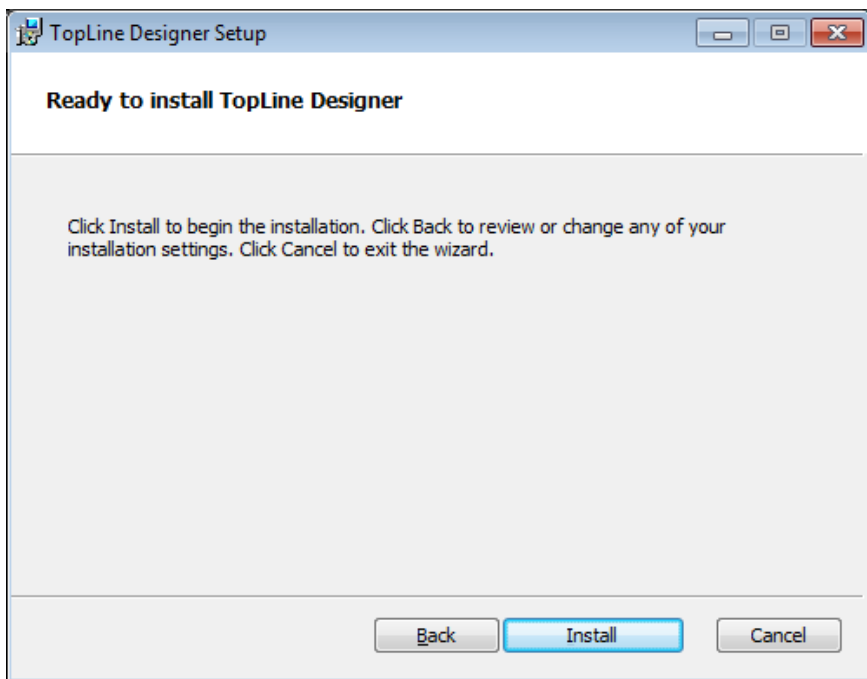
8. Click **Next** - after checking the *"I accept the terms of the License Agreement"*



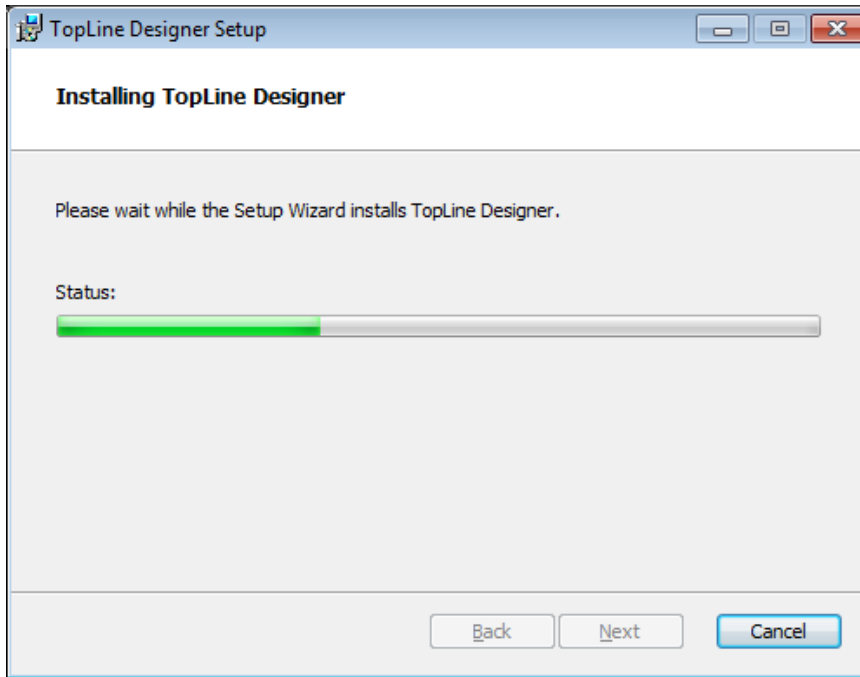
9. Click **Next**



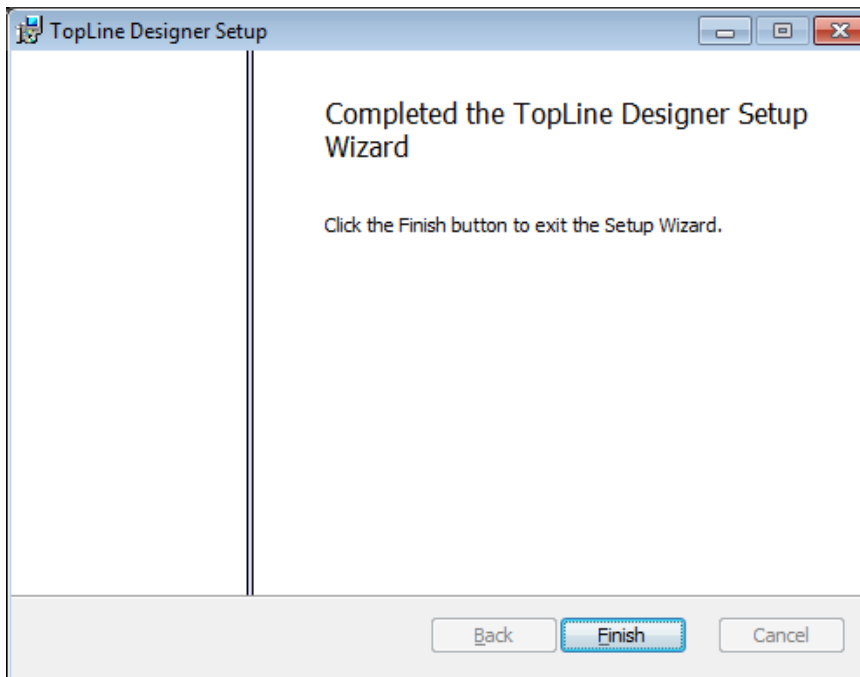
10. Click **Install**



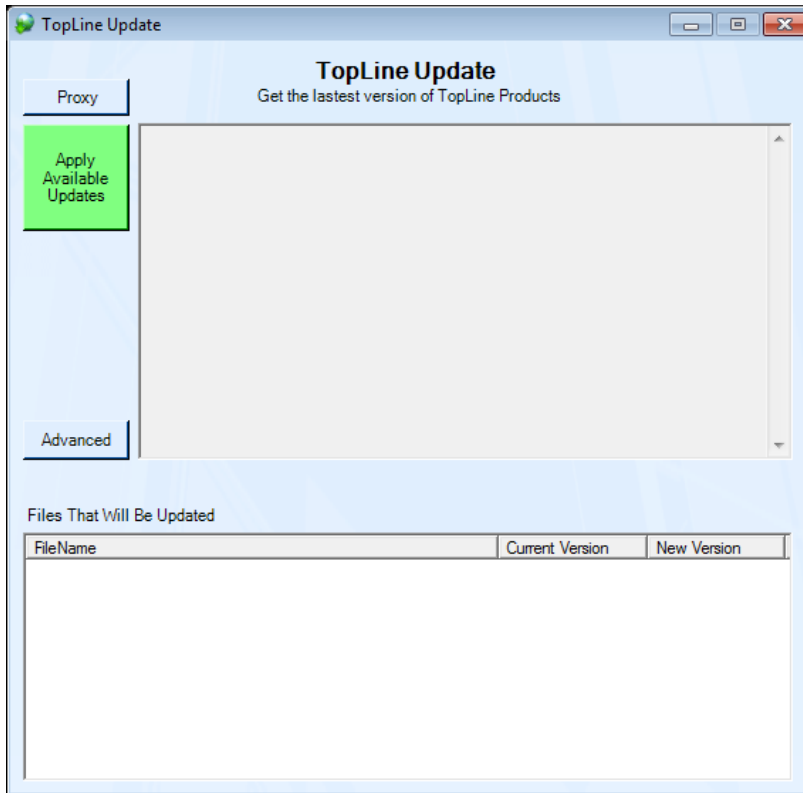
a. Installing Topline Designer – Cont.



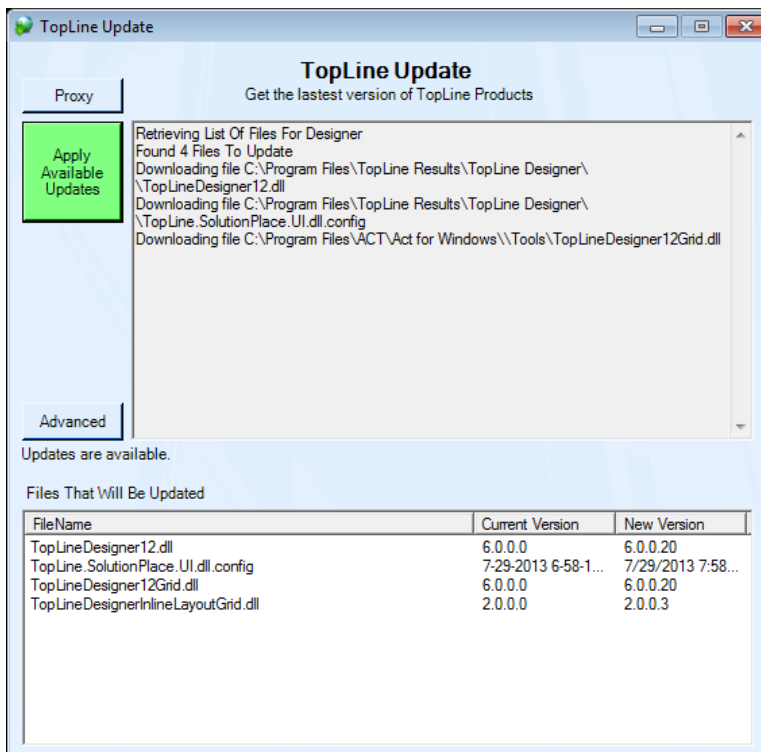
11. Click **Finish**



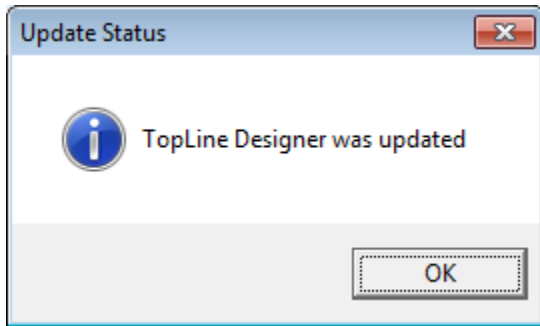
12. TopLine Update will now launch to update to the latest files for TopLine Results



13. Click **Apply Available Updates**



14. Updates will be applied – Click **OK** to complete the Topline Install



15. Click **Finish**

